

STATE OF OKLAHOMA  
DEPARTMENT OF TRANSPORTATION

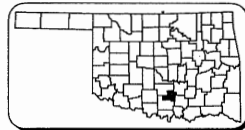
PLAN OF PROPOSED  
PEDESTRIAN IMPROVEMENTS  
STATE HIGHWAY 7/BROADWAY AVE.  
MURRAY COUNTY

JP 32934(04)  
PROJECT NO. HSIPG-250C(016)AD

CONTROL SURVEY DATA

- HORIZONTAL CONTROL:
  - HORIZONTAL CONTROL FOR THIS SURVEY IS THE USGS NAD 83 PLANE COORDINATE SYSTEM.
- BEARINGS:
 

THE BEARINGS SHOWN HEREIN OR HEREON ARE GROUND BEARINGS DERIVED FROM THE USC & GS OKLAHOMA STATE PLANE COORDINATE SYSTEM AND ARE NOT ASTRONOMICAL.
- VERTICAL CONTROLS:
  - LEVEL DATUM IS MEAN SEA LEVEL (USC & GS)
  - ACCURACY - THIRD ORDER OR BETTER



REVISIONS		
REV. NO.	DESCRIPTION	DATE

SHEET INDEX

SHEET NO.	DESCRIPTION
1	TITLE SHEET
2	QUANTITY SHEET
3	SUMMARY SHEET
4-5	TYPICAL SECTIONS
6-11	SURVEY DATA SHEETS
12-15	REMOVAL SHEETS
16-23	PLAN AND PROFILE SHEETS
24-32	CROSS SECTIONS
33	HANDRAIL DETAIL SHEET
34	STORMWATER MANAGEMENT PLAN

DESIGN DATA	
ADT (2010)	= 707
ADT (2030)	= 750
DHV-2 WAY	= 88
K	= 12%
D	= 50%
V (18TH)	= 30 MPH
T (%ADT)	= 12
T3 (%ADT)	= 15
T (%DHV)	= 12
FLEX ESALS	= 0.345M

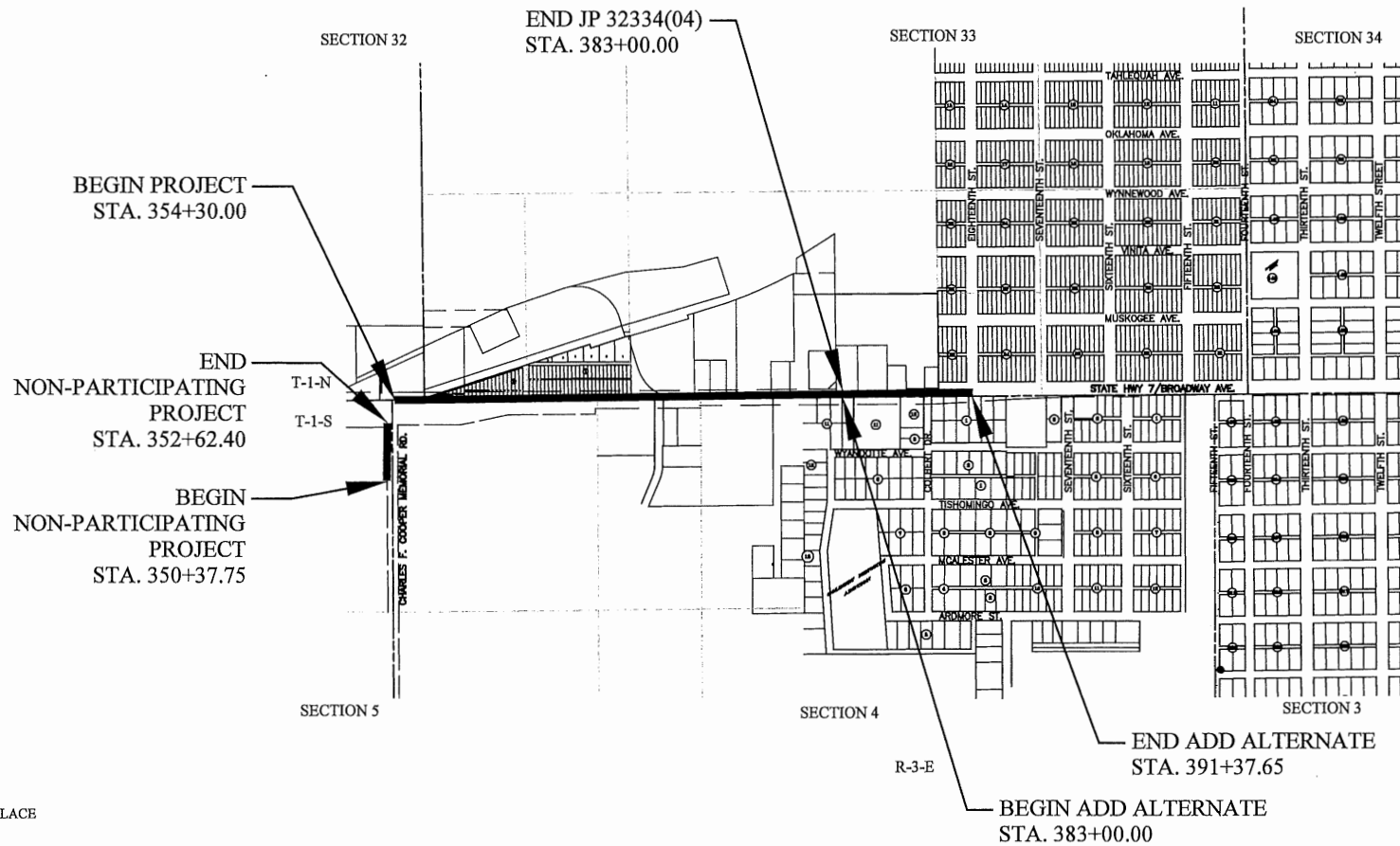
SCALES  
SEE INDIVIDUAL SHEETS

CONVENTIONAL SIGNS

- INTERSTATE HIGHWAY
- U.S. HIGHWAY
- STATE HIGHWAY

CONVENTIONAL SYMBOLS

- PROPOSED ROAD
- RAILROADS
- RANGE & TOWNSHIP
- SECTION LINES
- QUARTER SECTION LINES
- FENCES
- GROUND LINE
- EXISTING ROADS
- BASE LINE
- GRADE LINES
- TELEPHONE & TELEGRAPH
- POWER LINES
- BUILDINGS
- DRAINAGE STRUCTURES - IN PLACE
- DRAINAGE STRUCTURES - NEW
- RIGHT-OF-WAY LINES - EXISTING
- RIGHT-OF-WAY LINES - NEW
- RIGHT-OF-WAY MARKERS - IN PLACE
- RIGHT-OF-WAY MARKERS - REMOVE & REPLACE
- RIGHT-OF-WAY MARKERS - NEW
- CONTROLLED ACCESS
- RIGHT-OF-WAY FENCE



THE FOLLOWING STANDARD DRAWINGS OF OKLAHOMA DEPARTMENT OF TRANSPORTATION WILL BE REQUIRED FOR THIS PROJECT

- SSS-1-1 SOLID SLAB SODDING
- TSC2-3-2 TEMPORARY SEDIMENT CONTROLS
- ASCD-5-2 ASPHALT SURFACING CONSTRUCTION DETAILS
- CSCD-5-3 CONCRETE SURFACING CONSTRUCTION DETAILS
- LECS-4-1 JOINTS AND SEALERS - LONGITUDINAL, EXPANSION & CONTRACTION
- PR-3-0 PAVEMENT RECONSTRUCTION DETAILS
- PCPR-3-1 PORTLAND CEMENT CONCRETE PAVEMENT REPAIR
- WCR-3-1 WHEELCHAIR RAMPS
- TWD-1-0 TACTILE WARNING DEVICES
- TCS3-1-01 TEMPORARY TRAFFIC CONTROL ELEMENTS
- TCS5-1-00 TYPICAL SIGN INSTALLATION
- TCS6-1-02 CHANNELIZING DEVICES
- TCS7-1-02 ADVANCE WARNING SIGNS
- TCS9-1-01 CONSTRUCTION SIGNS
- TCS13-1-00 CONSTRUCTION SIGNS
- TCS19-1-01 CONSTRUCTION SIGNS

The City of  
**SULPHUR**

2009 OKLAHOMA STANDARD SPECIFICATIONS FOR HIGHWAY CONSTRUCTION - ENGLISH GOVERN, APPROVED BY THE U.S. DEPARTMENT OF TRANSPORTATION, FEDERAL HIGHWAY ADMINISTRATION, APRIL 20, 2009.

SIDEWALK LENGTH ----- 2870.00 FT ----- 0.54 MILES  
(ADD ALTERNATE) SIDEWALK LENGTH...837.65 FT...0.16 MILES  
(NP) SIDEWALK LENGTH ----- 224.65 FT ----- 0.04 MILES  
BRIDGE LENGTH ----- NONE  
PROJECT LENGTH ----- 0.74 MILES  
EQUATIONS: NONE EXCEPTIONS: NONE



ONE CALL UTILITY LOCATION NUMBER  
840-5032  
1-800-522-6543

THIS NUMBER IS TO BE USED FOR INFORMATION ON THE LOCATION OF ALL UNDERGROUND UTILITIES. CONTACT THIS NUMBER AND OTHER NUMBERS SPECIFIED IN THIS PLAN PRIOR TO ANY EXCAVATION.

		PREPARED BY:  WILLIAM T. MYERS, P.E. DATE 8-7-17	
OKLAHOMA DEPARTMENT OF TRANSPORTATION		DEPARTMENT OF TRANSPORTATION FEDERAL HIGHWAY ADMINISTRATION	
DATE APPROVED	BY	DATE APPROVED	BY
CHIEF ENGINEER		DIVISION ADMINISTRATOR	
STATE JOB # 32934(04)		PROJECT NO. HSIPG-250C(016)AD SHEET NO. 1	